

Big Sky Planning Packet

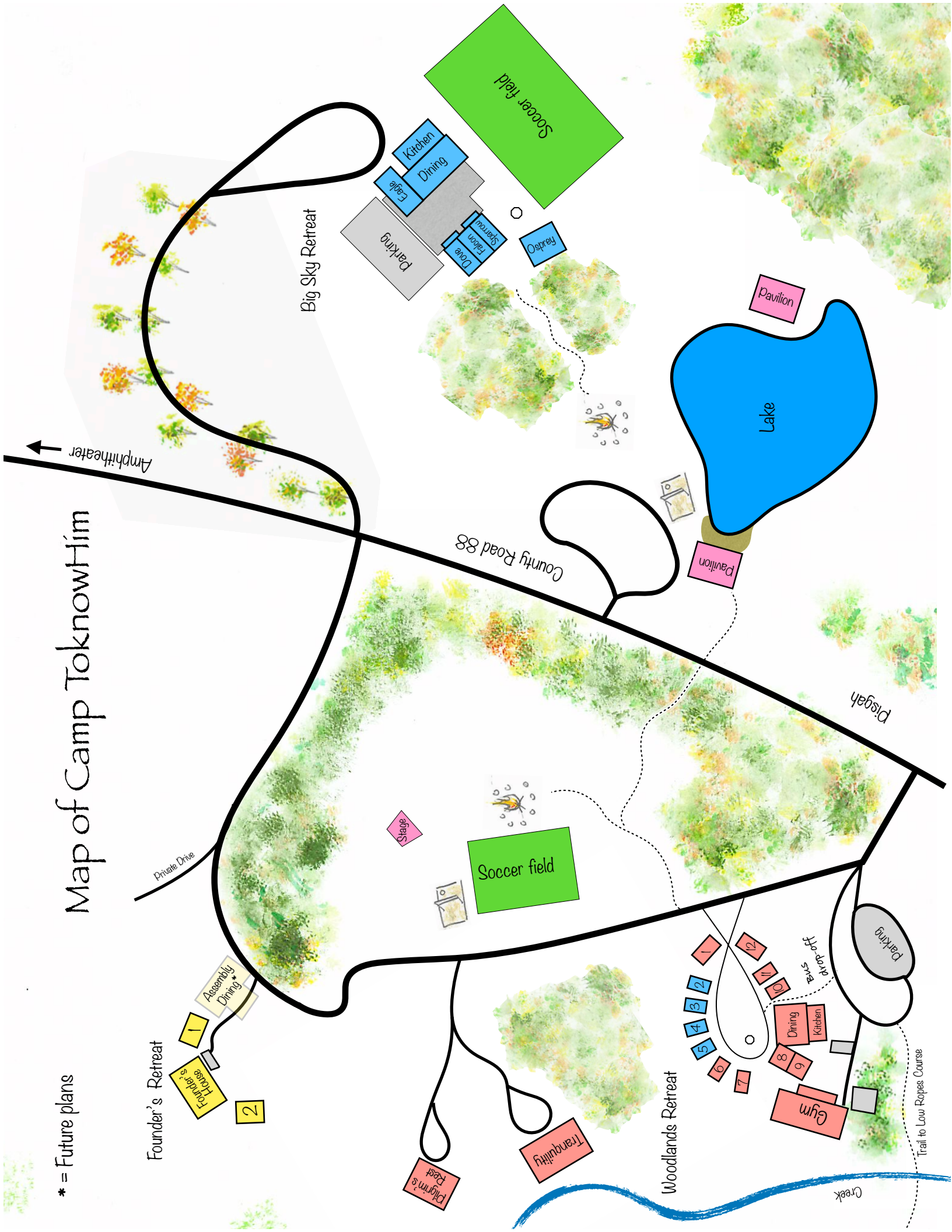


Camp ToknowHim

PO Box 190, Pisgah, AL 35765 256-451-7777

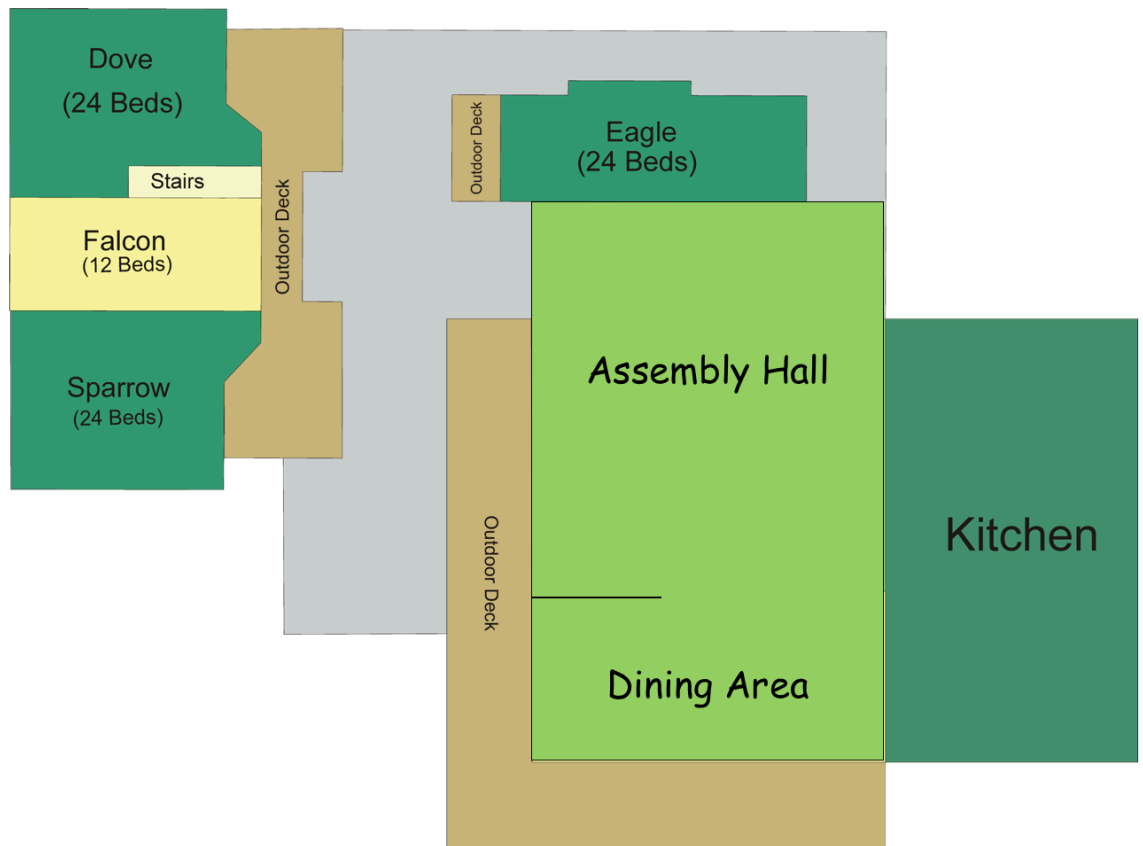
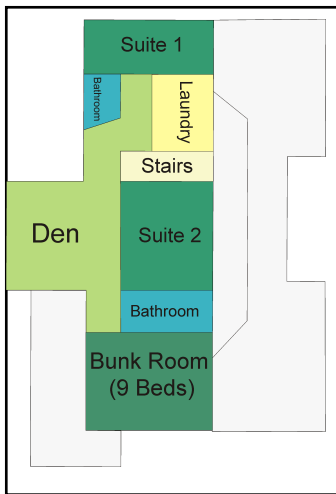
Map of Camp ToknowHim

* = Future plans



SMALL GROUP FACILITY POTENTIAL BEDS PER CABIN/BUILDING

CABIN	IN BUNK BEDS	ON COTS	TOTAL CAMPERS
Dove	24	6	30
Sparrow	24	6	30
Falcon	12	2	14
Eagle	24	0	24
Osprey	26	6	32
Suite 1	4 (1 Queen, 2 Singles)	0	4
Suite 2	2 (1 King)	2	4
Upstairs Bunk Room	9	0	9
TOTALS	125	22	147



Cots
(available if needed)



Suite 1



Suite 2



Cabin Bunks



Camp ToknowHim Scheduling and Activities

Lake Use (Summer Months)

- Large Group
 - 3pm-6pm
- Small Group
 - 12pm-3pm

Low Elements Ropes Course

- Large Group
 - 12pm-3pm
- Small Group
 - 3pm-6pm

Amphitheater

Amphitheater is located 2 miles down a gravel road that is located just 1 mile west down Co. Rd. 88. After scheduling use of Amphitheater, please indicate what method(s) of transportation you would like to use for your group:

- Transport your group in personal vehicles (SUV's, trucks, and some buses are acceptable, cars not recommended)
- Arrange for the 5 ton military truck to transport up to 90 people (make sure to check availability of truck and schedule ahead of time)

**** Refer to map and see location of Amphitheater**

Fishing

For individuals who would like to enjoy some fishing in their free time, there are 2 ponds available with a variety of fish. Please refer to map for location.



WATERFRONT RULES

- EACH GROUP MUST PROVIDE 4 ADULTS FOR SUPERVISION. 2 IN THE LIFEGUARD STANDS, 1 ON THE FLOATING DOCK AND 1 AT THE ROPE SWING
- NO SWIMMERS MAY ENTER THE WATER UNTIL ALL ADULTS ARE IN THEIR STATIONS
- ALL SWIMMERS OUTSIDE SWIM AREA MUST WEAR LIFE JACKETS
- ALL SWIMMERS MUST STAY WITHIN ROPED SWIMMING AREA (UNLESS USING ICEBERG OR ROPE SWING)
- NO DIVING OFF DOCKS OR ICEBERG

ROPE SWING USE

- LIFE JACKETS REQUIRED
- NO MORE THAN 3 PARTICIPANTS ON TOP LEVEL OF DOCK AT A TIME
- ONLY SWING STRAIGHT OFF OF THE PLATFORM
- PARTICIPANTS WAITING FOR THEIR TURN MUST REMAIN ON THE LOWEST PORTION OF THE DOCK TO PREVENT INJURY FROM THE RETRIEVAL STICK

ICEBERG USE

- LIFE JACKETS ARE REQUIRED
- NO MORE THAN 6 PEOPLE USING ICEBERG SWIM AREA AT A TIME
- ONLY 2 PEOPLE CLIMBING ON ICEBERG AT A TIME TO PREVENT IT FROM TIPPING OR RIPPING
- ONLY JUMP OR SLIDE OFF SIDE WITH NO HANDLES
- AFTER JUMP OR SLIDE, SWIM IMMEDIATELY OUT OF THE WAY

KAYAK USE

- LIFE JACKETS REQUIRED
- RETURN KAYAKS NEATLY TO THE DESIGNATED AREA



Cleaning

In order to help us keep the camp looking great, we ask all guests to leave the camp as they found it. We provide brooms, mops, trash bags, cleaning spray, and cleaning rags, and we have signs posted in every cabin to help guide campers through the cleaning process.

We will do a walk-through of the cabins 15-30 minutes before you leave, and help with any remaining cleaning that needs to be made to ensure it is ready for our next guests.

Kitchen Planning



THE KITCHEN IS EQUIPPED WITH:

2 RESIDENTIAL STOVE/OVENS
2 MICROWAVE OVENS
THREE RESIDENTIAL ALL REFRIGERATORS
UPRIGHT FREEZER
COMMERCIAL COFFEE/TEA MAKER
2 COFFEE AIRPOTS
1 TEA DISPENSER
ICE MACHINE
POTS/PANS/UTENSILS
ELECTRIC GRIDDLES
ELECTRIC SKILLETS
2 FIVE-GALLON DRINK COOLERS
2 TOASTERS
ELECTRIC MIXER
DISH TOWELS/POT HOLDERS
LARGE GAS GRILL (PROPANE PROVIDED)

THE CAMP PROVIDES:

TRASH BAGS
COFFEE FILTERS
SHOWER SOAP
HAND SOAP
DISH SOAP
PAPER TOWELS
TOILET PAPER
CLEANING PRODUCTS

IF YOU ARE DOING YOUR OWN COOKING THE CAMP DOES NOT PROVIDE:

FOOD
DRINKS
CUPS
PLATES
PLASTIC WARE
NAPKINS
PLASTIC WRAP/ALUMINUM FOIL
COFFEE/CREAMER/SUGAR/SWEETENERS



Catered meals are available, and the food is delicious! Current pricing can be found on the downloads page of our website under "catering contract". If you are interested in having your meals catered, please contact Michelle Powell directly.

Catering Menu

Michelle Powell 256-557-0769

Breakfast Options

All Breakfasts are served with Coffee, Juice, Milk, Fruit and Cereal

- Biscuits and Sausage Gravy with Eggs
- Pancakes with toppings of choice and Sausage
- Breakfast Casserole with Muffins and Yogurt
- French Toast with Toppings of choice and Bacon
- Sausage Biscuits and Bacon Biscuits with Hash Browns
- Eggs with Bacon and Toast

Lunch Options

All Lunches are served with Tea, Kool-aid, and Dessert

- Hotdogs and Hamburgers, Chips and Baked Beans
- Taco Salad with Toppings
- Pizza and Salad
- Sub sandwiches with Chips and Home Style Chicken Soup
- Barbecue Sandwiches with Potato Salad or Chips and Coleslaw

Dinner Options

All Dinners are served with rolls or cornbread, Dessert, Tea and Kool-aid

- Chicken Fingers with Mashed Potatoes, Green Beans and Mac and Cheese
- Spaghetti with Salad and Garlic Bread
- Baked Ham with Scalloped Potatoes, Peas and Corn
- Creamy Oven Chicken with Roasted Potatoes and Mixed Vegetables
- Pork Loin with Mushroom Gravy , Roasted Potatoes and Black Eyed Peas
- Roast Beef or Cajun Roast Beef with Carrots and Potatoes
- Grilled Chicken with Party Potatoes and Green Beans

Sound Equipment At Our Small Group Facility



Behringer x32 Digital Sound Board



2 Mackie SR1530 Powered Speakers
2 JBL Eon Power15 Monitors



4 Shure SM58
Microphones
High Definition Projector
Microphone Stands
2 Direct Boxes
Guitar Stands
1/4" Cables
XLR Cables
Built in snake cables
Wireless Internet