

Woodlands Planning Packet

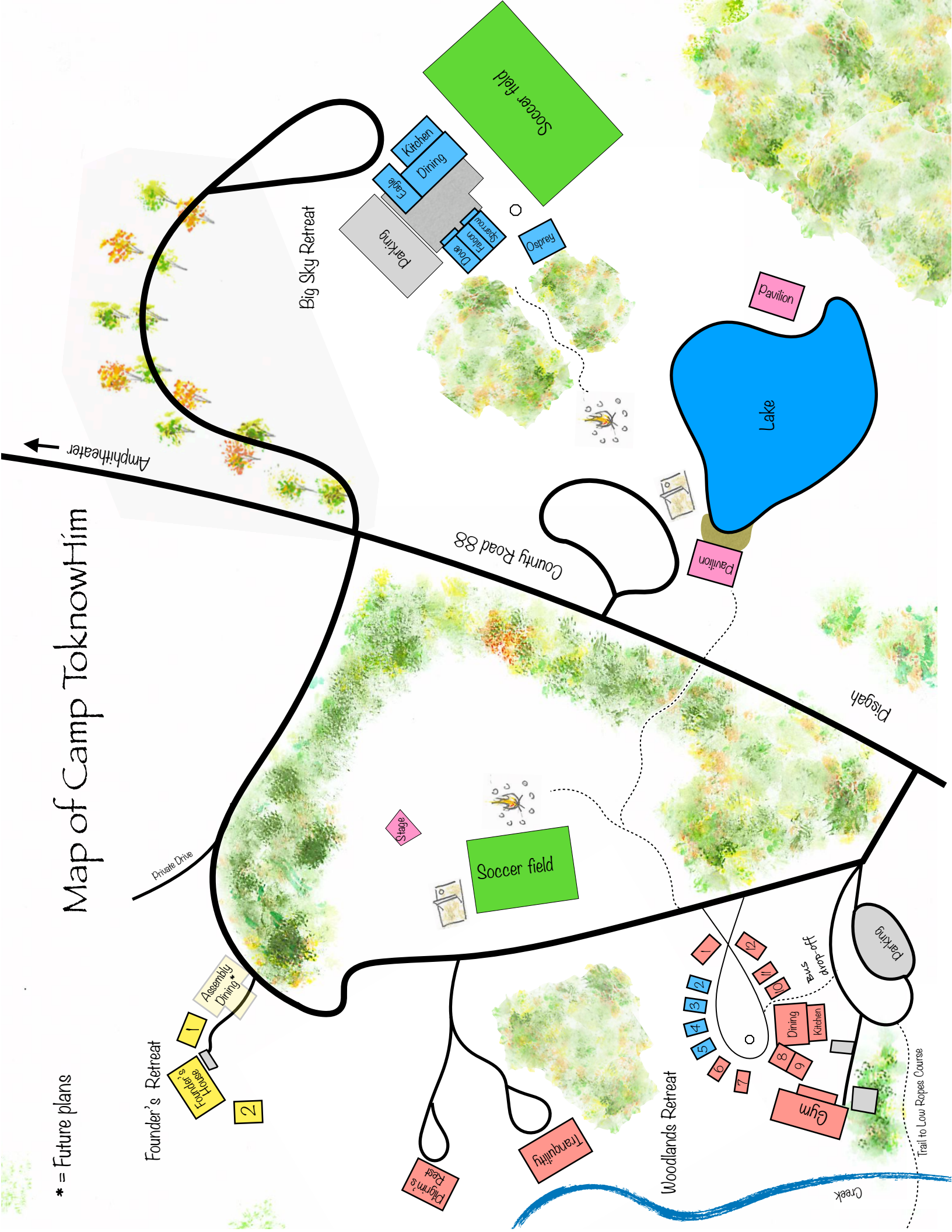


Camp ToknowHim

PO Box 190, Pisgah, AL 35765 256-451-7777

Map of Camp ToknowHim

* = Future plans



Founder's Retreat

Private Drive

Assembly Dining

1
2
Founder's House

2

Big Sky Retreat

Parking

Eagle

Dining

Kitchen

Soccer field

Stage

Soccer field

County Road 88

1

2

3

4

5

6

7

8

9

Dining

Kitchen

Gym

Parking

Drop-off

Creek

Trial to Low Ropes Course

Pavilion

Lake

Pavilion

Prisgah

Soccer field

Osprey

Dove

Sparrow

Kitchen

Dining

Eagle

Parking

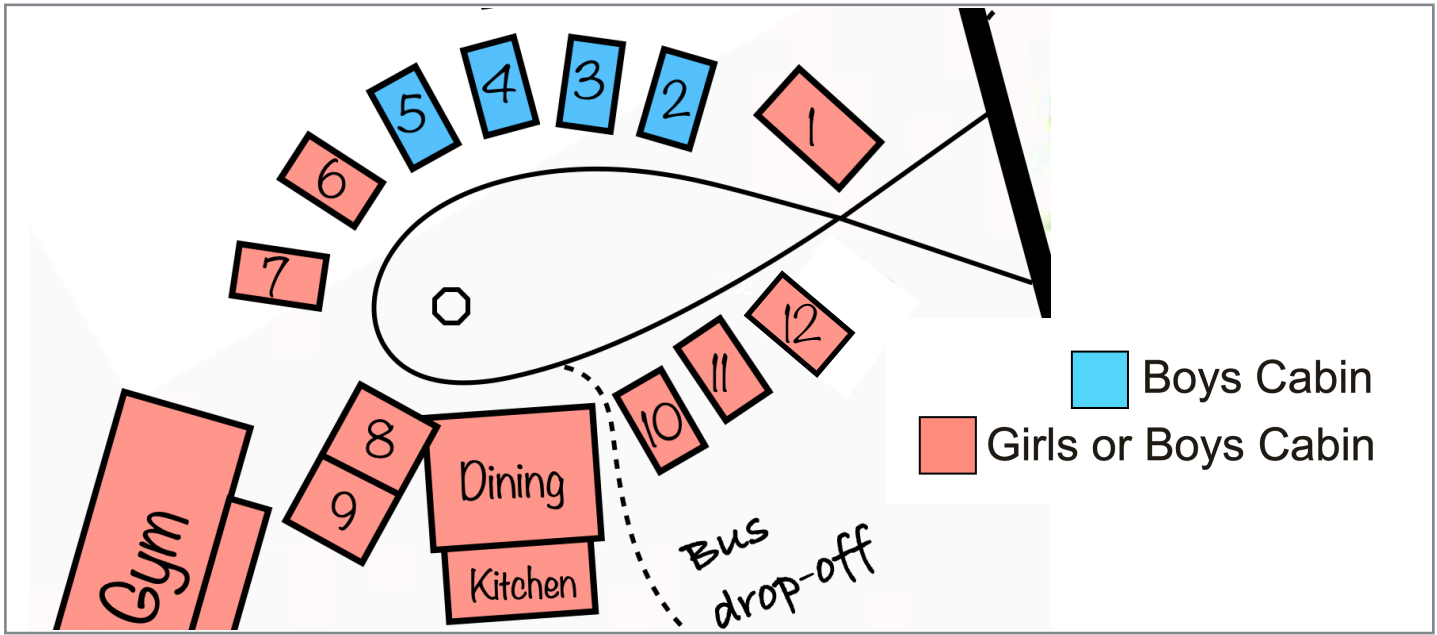
Amphitheater

Woodlands Retreat

Tranquility

Plym's Rest

Number of Available Beds Per Cabin



Building	Bunk Beds	Cots	Available Beds
Cabin #1	24	8	32
Cabin #2 (Boys)	14	4	18
Cabin #3 (Boys)	14	4	18
Cabin #4 (Boys)	14	4	18
Cabin #5 (Boys)	14	4	18
Cabin #6	14	4	18
Cabin #7	14	4	18
Cabin #8	16	8	24
Cabin #9	16	8	24
Cabin #10	14	4	18
Cabin #11	14	4	18
Cabin #12	24	8	32
Totals	192	64	256



Bunk Beds



Cots
(available if needed)



Camp ToKnowHim

Scheduling and Activities

Lake Use (Summer Months)

- The Woodlands
3pm-6pm
- Big Sky
 - 12pm-3pm

Low Elements Ropes Course

- The Woodlands
 - 12pm-3pm
- Big Sky
 - 3pm-6pm

Amphitheater

Amphitheater is located 2 miles down a gravel road that is located just 1 mile west down Co. Rd. 88. After scheduling use of Amphitheater, please indicate what method(s) of transportation you would like to use for your group:

- Transport your group in personal vehicles (SUV's, trucks, and some buses are acceptable, cars not recommended)
- Arrange for us to transport your group with our 5 ton military truck and/or bus (make sure to check availability and schedule ahead of time)

**** Refer to map and see location of Amphitheater**

Fishing

For individuals who would like to enjoy some fishing in their free time, there are 2 ponds available with a variety of fish. Please refer to



Kitchen Planning



THE CAMP KITCHEN IS EQUIPPED WITH:

DISH TOWELS/POTHOLDERS
6 FIVE GALLON DRINK COOLERS
CONVECTION OVEN
TWO RESIDENTIAL STOVES/OVENS
UPRIGHT FREEZER/CHEST FREEZER
TWO LARGE REFRIGERATORS
TOASTERS
COMMERCIAL COFFEE MAKER
COMMERCIAL ICED TEA MAKER
ELECTRIC SKILLETS AND GRIDDLES
2 LARGE ELECTRIC ROASTING PANS
ELECTRIC MIXER
POTS/PANS/SERVING UTENSILS
DRY GOODS STORAGE AREA
TWO LARGE GAS GRILLS AND A SMOKER

THE CAMP PROVIDES:

TRASH BAGS
TOILET TISSUE
PAPER TOWELS
COFFEE FILTERS
SHOWER SOAP
HAND SOAP
DISH SOAP
CLEANING SUPPLIES
ICE

THE CAMP DOES NOT PROVIDE:

FOOD
DRINKS
CUPS
PLATES
PLASTICWARE
NAPKINS
PLASTIC WRAP/ALUMINUM FOIL
COFFEE/CREAMER/SUGAR/SWEETENERS
TEA BAGS FOR TEA MAKER (4 OZ. BAGS)

Catering Menu

Catered meals are available, and the food is delicious! Current pricing can be found on the downloads page of our website under "catering contract". If you are interested in having your meals catered, please contact Michelle Powell directly.

Michelle Powell 256-557-0769

Breakfast Options

All Breakfasts are served with Coffee, Juice, Milk, Fruit and Cereal

- Biscuits and Sausage Gravy with Eggs
- Pancakes with toppings of choice and Sausage
- Breakfast Casserole with Muffins and Yogurt
- French Toast with Toppings of choice and Bacon
- Sausage Biscuits and Bacon Biscuits with Hash Browns
- Eggs with Bacon and Toast

Lunch Options

All Lunches are served with Tea, Kool-aid, and Dessert

- Hotdogs and Hamburgers, Chips and Baked Beans
- Taco Salad with Toppings
- Pizza and Salad
- Sub sandwiches with Chips and Home Style Chicken Soup
- Barbecue Sandwiches with Potato Salad or Chips and Coleslaw

Dinner Options

All Dinners are served with rolls or cornbread, Dessert, Tea and Kool-aid

- Chicken Fingers with Mashed Potatoes, Green Beans and Mac and Cheese
- Spaghetti with Salad and Garlic Bread
- Baked Ham with Scalloped Potatoes, Peas and Corn
- Creamy Oven Chicken with Roasted Potatoes and Mixed Vegetables
- Pork Loin with Mushroom Gravy , Roasted Potatoes and Black Eyed Peas
- Roast Beef or Cajun Roast Beef with Carrots and Potatoes
- Grilled Chicken with Party Potatoes and Green Beans

Audio Visual Equipment



Behringer x32 Digital Sound Board



2 Mackie SR1530 Powered Speakers
2 OSP PS215 Powered Monitors



Optoma HD Projector
3 Shure SM58 Microphones
3 Shure SM57 Microphones
3 Shure PG56 Microphones
2 Shure PG81 Microphones
1 Shure PG52 Microphone
1 Telex SE60 Microphone
2 Leem NDR20 Direct Boxes
5 Microphone Stands
2 Guitar Stands
1/4" Cables
XLR Cables
Built in snake cables
Wireless Internet

WATERFRONT RULES

- EACH GROUP MUST PROVIDE 4 ADULTS FOR SUPERVISION. 2 IN THE LIFEGUARD STANDS, 1 ON THE FLOATING DOCK AND 1 AT THE ROPE SWING
- NO SWIMMERS MAY ENTER THE WATER UNTIL ALL ADULTS ARE IN THEIR STATIONS
- ALL SWIMMERS OUTSIDE SWIM AREA MUST WEAR LIFE JACKETS
- ALL SWIMMERS MUST STAY WITHIN ROPED SWIMMING AREA (UNLESS USING ICEBERG OR ROPE SWING)
- NO DIVING OFF DOCKS OR ICEBERG

ROPE SWING USE

- LIFE JACKETS REQUIRED
- NO MORE THAN 3 PARTICIPANTS ON TOP LEVEL OF DOCK AT A TIME
- ONLY SWING STRAIGHT OFF OF THE PLATFORM
- PARTICIPANTS WAITING FOR THEIR TURN MUST REMAIN ON THE LOWEST PORTION OF THE DOCK TO PREVENT INJURY FROM THE RETRIEVAL STICK

ICEBERG USE

- LIFE JACKETS ARE REQUIRED
- NO MORE THAN 6 PEOPLE USING ICEBERG SWIM AREA AT A TIME
- ONLY 2 PEOPLE CLIMBING ON ICEBERG AT A TIME TO PREVENT IT FROM TIPPING OR RIPPING
- ONLY JUMP OR SLIDE OFF SIDE WITH NO HANDLES
- AFTER JUMP OR SLIDE, SWIM IMMEDIATELY OUT OF THE WAY

KAYAK USE

- LIFE JACKETS REQUIRED
- RETURN KAYAKS NEATLY TO THE DESIGNATED AREA



Cleaning

In order to help us keep the camp looking great, we ask all guests to leave the camp as they found it. We provide brooms, mops, trash bags, cleaning spray, and cleaning rags, and we have signs posted in every cabin to help guide campers through the cleaning process.

We will do a walk-through of the cabins 15-30 minutes before you leave, and help with any remaining cleaning that needs to be made to ensure it is ready for our next guests.

Leadership Cabins

Pilgrim's Rest is a one-bedroom cabin often used for a leader or guest speaker and their spouse.



Tranquility has two king suites and a loft with a twin, a double, a futon, and a trundle for sleeping arrangements and is often used for leaders, cooks, or the band.



Did you know?

When not used by groups at the camp, we make *Tranquility* and *Pilgrim's Rest* available to use as a reprieve for those in full-time ministry or for other ministry purposes.